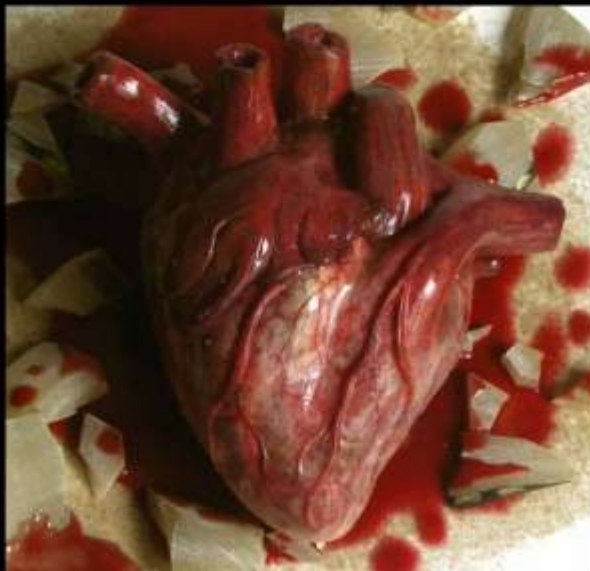
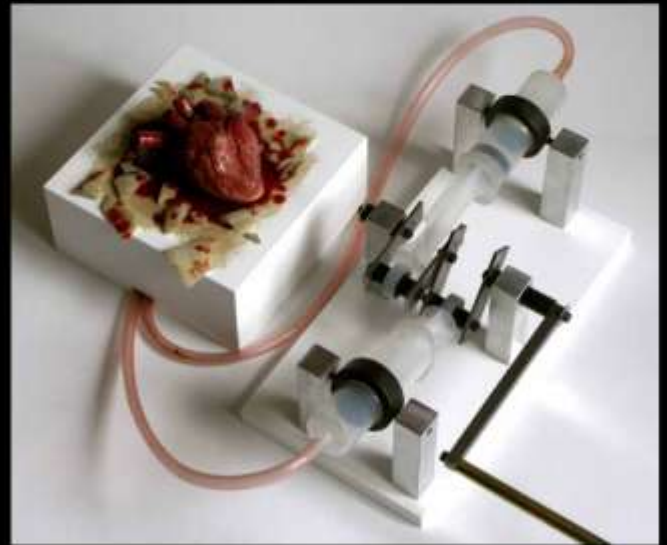


SILICONE 'BEATING' HEART



3RD YEAR PROJECT.

HOLLOW SILICONE MASTIC HEART WITH BEATING EFFECT CREATED BY BALLOONS INFLATING INSIDE IT; POWERED BY AIR FILLED SYRINGES.

MECHANISM: MILD STEEL, SILVER STEEL AND ALUMINIUM CONSTRUCTION

HEART DIMENSIONS: 110 X 120 X 60MM

MARGARET PLUNKETT

EGYPTIAN CANOPIC JARS



DIMENSIONS: 120 X 120
X 200MM



3RD YEAR PROJECT.

CLEAR FASTCAST WITH WHITE PIGMENT,
ACRYLIC INK, GOLDFINGER AND FRENCH
ENAMEL VARNISH



MARGARET PLUNKETT